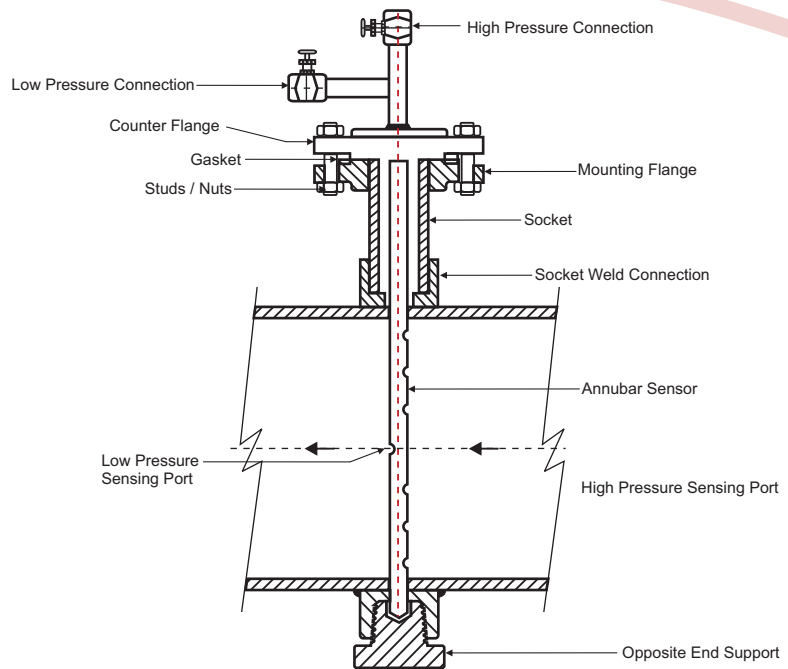


AB 400# Series Averaging Bar - Flange Mounted



Anubar is a dual chamber tube with multiple sensing ports on both the chambers i.e. upstream & downstream. This flow element when inserted into the flow stream produces boundary layer there by having High Pressure & Low Pressure gradient around the sensor body. The presence of HP & LP ports in that gradient helps it to sense the pressure in respective chambers & when this two respective tubings are connected to DP Transmitter it gives you a flow signal. Anubar is also called as averaging pitot tube used for large flow rate.

<table border="1"> <thead> <tr> <th>Code</th> <th>Element / Sensor Type</th> </tr> </thead> <tbody> <tr> <td>AB</td> <td>Averaging Pitot Tube [Anubar]</td> </tr> </tbody> </table>	Code	Element / Sensor Type	AB	Averaging Pitot Tube [Anubar]	1		<table border="1"> <thead> <tr> <th>Code</th> <th>Option</th> </tr> </thead> <tbody> <tr> <td>Op0</td> <td>None</td> </tr> <tr> <td>Op11</td> <td>Nipples</td> </tr> <tr> <td>Op12</td> <td>Valves</td> </tr> <tr> <td>Other</td> <td>See Table-7</td> </tr> </tbody> </table>	Code	Option	Op0	None	Op11	Nipples	Op12	Valves	Other	See Table-7	11		
Code	Element / Sensor Type																			
AB	Averaging Pitot Tube [Anubar]																			
Code	Option																			
Op0	None																			
Op11	Nipples																			
Op12	Valves																			
Other	See Table-7																			
<table border="1"> <thead> <tr> <th>Code</th> <th>Element / Sensor Material</th> </tr> </thead> <tbody> <tr> <td>304/L</td> <td>SS304/304L</td> </tr> <tr> <td>316/L</td> <td>SS316/316L</td> </tr> <tr> <td>Mo</td> <td>Monel</td> </tr> <tr> <td>Other</td> <td>Please Specify</td> </tr> </tbody> </table>	Code	Element / Sensor Material	304/L	SS304/304L	316/L	SS316/316L	Mo	Monel	Other	Please Specify	2		<table border="1"> <thead> <tr> <th>Code</th> <th>Opp. side/End Supporting Mounting</th> </tr> </thead> <tbody> <tr> <td>TH</td> <td>Threaded</td> </tr> <tr> <td>SW</td> <td>Socket Weld</td> </tr> </tbody> </table>	Code	Opp. side/End Supporting Mounting	TH	Threaded	SW	Socket Weld	10
Code	Element / Sensor Material																			
304/L	SS304/304L																			
316/L	SS316/316L																			
Mo	Monel																			
Other	Please Specify																			
Code	Opp. side/End Supporting Mounting																			
TH	Threaded																			
SW	Socket Weld																			
<table border="1"> <thead> <tr> <th>Code</th> <th>Element / Sensor Shape</th> </tr> </thead> <tbody> <tr> <td>D</td> <td>Diamond</td> </tr> <tr> <td>R</td> <td>Round</td> </tr> </tbody> </table>	Code	Element / Sensor Shape	D	Diamond	R	Round	3		<table border="1"> <thead> <tr> <th>Code</th> <th>Gasket Material</th> </tr> </thead> <tbody> <tr> <td>G1</td> <td>CAF</td> </tr> <tr> <td>G2</td> <td>[SS304 + CAF]</td> </tr> <tr> <td>Other</td> <td>Select from Table 5</td> </tr> </tbody> </table>	Code	Gasket Material	G1	CAF	G2	[SS304 + CAF]	Other	Select from Table 5	9		
Code	Element / Sensor Shape																			
D	Diamond																			
R	Round																			
Code	Gasket Material																			
G1	CAF																			
G2	[SS304 + CAF]																			
Other	Select from Table 5																			
<table border="1"> <thead> <tr> <th>Code</th> <th>Pipe Size</th> </tr> </thead> <tbody> <tr> <td>XX</td> <td>Please Define Viz. 400NB 6.35 thk</td> </tr> </tbody> </table>	Code	Pipe Size	XX	Please Define Viz. 400NB 6.35 thk	4		<table border="1"> <thead> <tr> <th>Code</th> <th>Gasket Type</th> </tr> </thead> <tbody> <tr> <td>FR</td> <td>Flat Ring</td> </tr> <tr> <td>SP</td> <td>Spiral Wound</td> </tr> <tr> <td>RTJ</td> <td>Ring Type Joint</td> </tr> <tr> <td>Other</td> <td>Please Define</td> </tr> </tbody> </table>	Code	Gasket Type	FR	Flat Ring	SP	Spiral Wound	RTJ	Ring Type Joint	Other	Please Define	8		
Code	Pipe Size																			
XX	Please Define Viz. 400NB 6.35 thk																			
Code	Gasket Type																			
FR	Flat Ring																			
SP	Spiral Wound																			
RTJ	Ring Type Joint																			
Other	Please Define																			
<table border="1"> <thead> <tr> <th>Code</th> <th>Mounting Type</th> </tr> </thead> <tbody> <tr> <td>Flg</td> <td>Flanged</td> </tr> <tr> <td>SW</td> <td>Socket Weld</td> </tr> </tbody> </table>	Code	Mounting Type	Flg	Flanged	SW	Socket Weld	5		<table border="1"> <thead> <tr> <th>Code</th> <th>Studs / Nuts</th> </tr> </thead> <tbody> <tr> <td>B7/2H</td> <td>A193 Gr.B7 / A194 Gr.2H</td> </tr> <tr> <td>Other</td> <td>[Please See Table -4]</td> </tr> </tbody> </table>	Code	Studs / Nuts	B7/2H	A193 Gr.B7 / A194 Gr.2H	Other	[Please See Table -4]	7				
Code	Mounting Type																			
Flg	Flanged																			
SW	Socket Weld																			
Code	Studs / Nuts																			
B7/2H	A193 Gr.B7 / A194 Gr.2H																			
Other	[Please See Table -4]																			
<table border="1"> <thead> <tr> <th>Code</th> <th>Flange Size/Rating/Type/Mat'l</th> </tr> </thead> <tbody> <tr> <td>XX</td> <td>Please Define e.g. 2" 150# SORF A105</td> </tr> </tbody> </table>	Code	Flange Size/Rating/Type/Mat'l	XX	Please Define e.g. 2" 150# SORF A105	6															
Code	Flange Size/Rating/Type/Mat'l																			
XX	Please Define e.g. 2" 150# SORF A105																			

ORDERING INFORMATION

AB400# Series AB-316-D-300 NB 6.35 Thk-Flg-2" 150#-SORF A105-B7/2H-FR-G1-TH-Op11-Op12

Hydropneumatics Private Limited