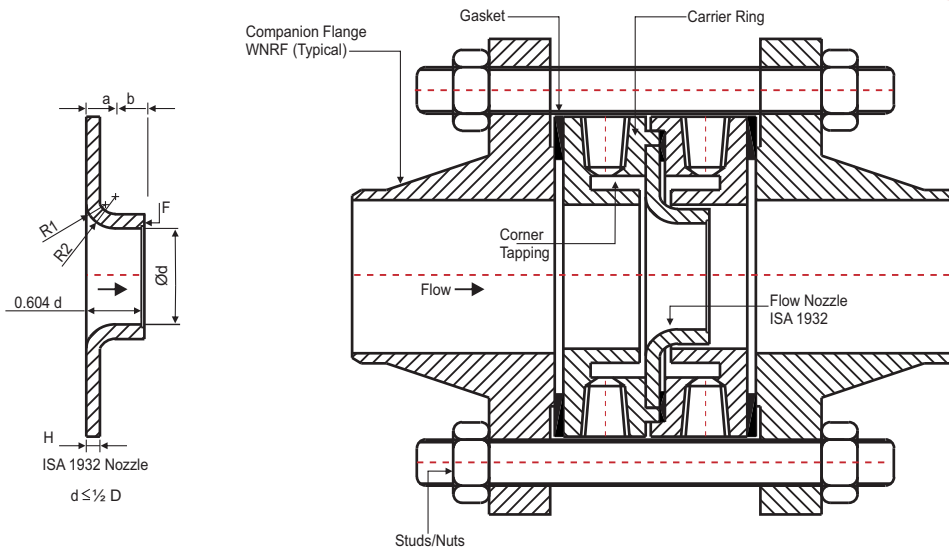
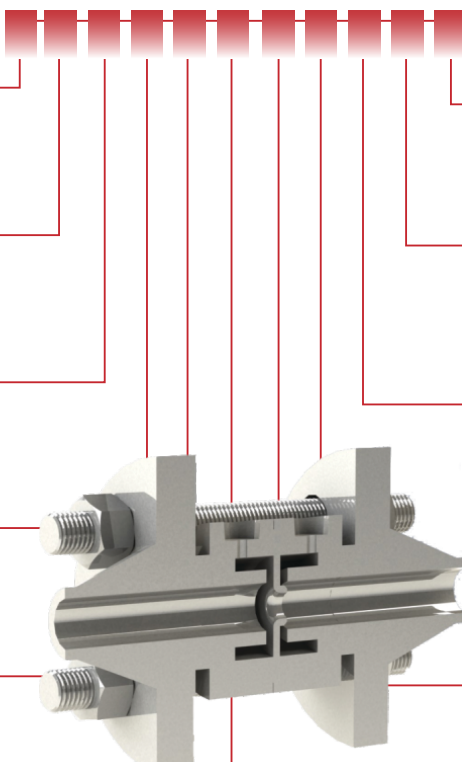


# FN200C# Series ISA 1932 Flow Nozzle with Carrier Ring



The Flow Nozzle is inserted between the Carrier Rings. The Flow nozzle is designed for corner taps which are provided on Carrier Rings either in annular groove form or by slant drilling. The Nozzle Flange can be furnished in any type of facing (raised, ring-joint, etc) as specified.



Code	Element Type
ISAN	ISA 1932 Flow Nozzle

Code	Element Material
F304/L	A182 Gr.F304 / F304L
F316/L	A182 Gr.F316 / F316L
Mo	Monel
Ti	Titanium
Hb/Hc	Hastelloy C/B
A20	Alloy 20
Other	Please Specify

Code	Carrier Ring Type
MF	Male - Female

Code	Carrier Ring Material
A105	ASTM A105
304/L	A182 Gr.F304/F304L
316/L	A182 Gr.F316/F316L
Ti	Titanium
Tf	Teflon
Mo	Monel
Other	Please Specify

Code	Companion Flange Details
XX	Define eg:150NB 600#Sch.120WNRF

Code	Flange Material
A105	ASTM A105
304/L	A182 Gr.F304/F304L
316/L	A182 Gr.F316/F316L
F5	A182 Gr.F5
F11	A182 Gr.F11
F12	A182 Gr.F12
Other	Please Specify

Code	Option
0	None
1	IBR Form III C
Other	See Table-7

Code	Pressure Tapping Connection
3N	1/2" NPT [F]
4N	3/4" NPT [F]
2B	1/2" BSP [F]
1T	3/4" BSP [F]
	Other [see table - 6]

Code	Gasket Material
G1	CAF
G2	[SS304 + CAF]
G3	[Ss316 + CAF]
Other	Select from Table 5

Code	Gasket Type
FR	Flat Ring
SP	Spiral Wound
Other	Please Define

Code	Studs/Nut & Jack Screw Mat'l
B7/2H	A193 Gr.B7 / A194 Gr.2H
	Other [See Table -4]

## ORDERING INFORMATION

FN200 C# Series ISAN-F316-MF-F316-100NB 300# Sch.80-WNRF-F316-B7/2H-SP-G2-3N-Op0

Hydropneumatics Private Limited